

SAFETY ON THIS JOB  
DEPENDS ON YOU

REVISIONS					
NO	SYM	ZONE	DESCRIPTIONS	DATE	APPROVED

DIRECTION	DISTANCE	NORTHING	EASTING
N 68 09 12.1 E	622.829	986273.023	706151.016
N 68 09 12.1 E	629.987	986504.792	706729.113
N 68 09 12.1 E	629.987	986739.225	707313.859
N 68 09 12.1 E	629.987	986973.658	707898.402
N 68 09 12.1 E	629.987	987208.091	708483.345
N 68 09 12.1 E	629.987	987442.524	709068.089
N 68 09 12.1 E	629.987	987676.957	709652.832
N 68 09 12.1 E	629.987	987911.390	710237.576
N 68 09 12.1 E	652.218	988154.096	710842.953
N 68 09 12.1 E	627.756	988387.698	711425.626
N 68 09 12.1 E	629.987	988622.131	712010.369
N 68 09 12.1 E	629.987	988856.564	712595.112
N 68 09 12.1 E	629.987	989090.997	713179.856
N 68 09 12.1 E	629.987	989325.430	713764.599
N 68 09 12.1 E	629.987	989559.863	714349.343
N 68 09 12.1 E	629.987	989794.296	714934.086
N 68 09 12.1 E	629.987	990028.729	715518.829
N 68 09 12.1 E	681.837	990262.457	716103.571
N 68 09 12.1 E	648.136	990496.185	716688.314
N 68 09 12.1 E	453.455	990729.913	717273.057
N 68 09 12.1 E	343.541	990963.641	717857.800
N 68 05 42.1 E	256.447	991197.369	718442.543
N 68 05 42.1 E	469.120	991431.097	719027.286
N 68 05 42.1 E	577.195	991664.825	719612.029

**GENERAL NOTES**

**TABULATED DATA:**  
All Bearings, Distances, and Co-ordinate values given in the TABULATED LISTING are based on FLORIDA STATE PLANE COORDINATE DATA - EAST ZONE (Scale Factor 0.99997942). Stationing shown in the tables, and elsewhere is based on data computed from FIELD MEASUREMENTS and is NOT SCALE CORRECTED.

**PLAN DATA:**  
Station values shown are based on computed field values for centerline of the R/W (as perpendicular to centerline).

All distances shown on the Plan are FIELD MEASUREMENTS based on adjusted control traverses between NGS Triangulation Stations.

All bearings shown are GRID based on the NGS ties.

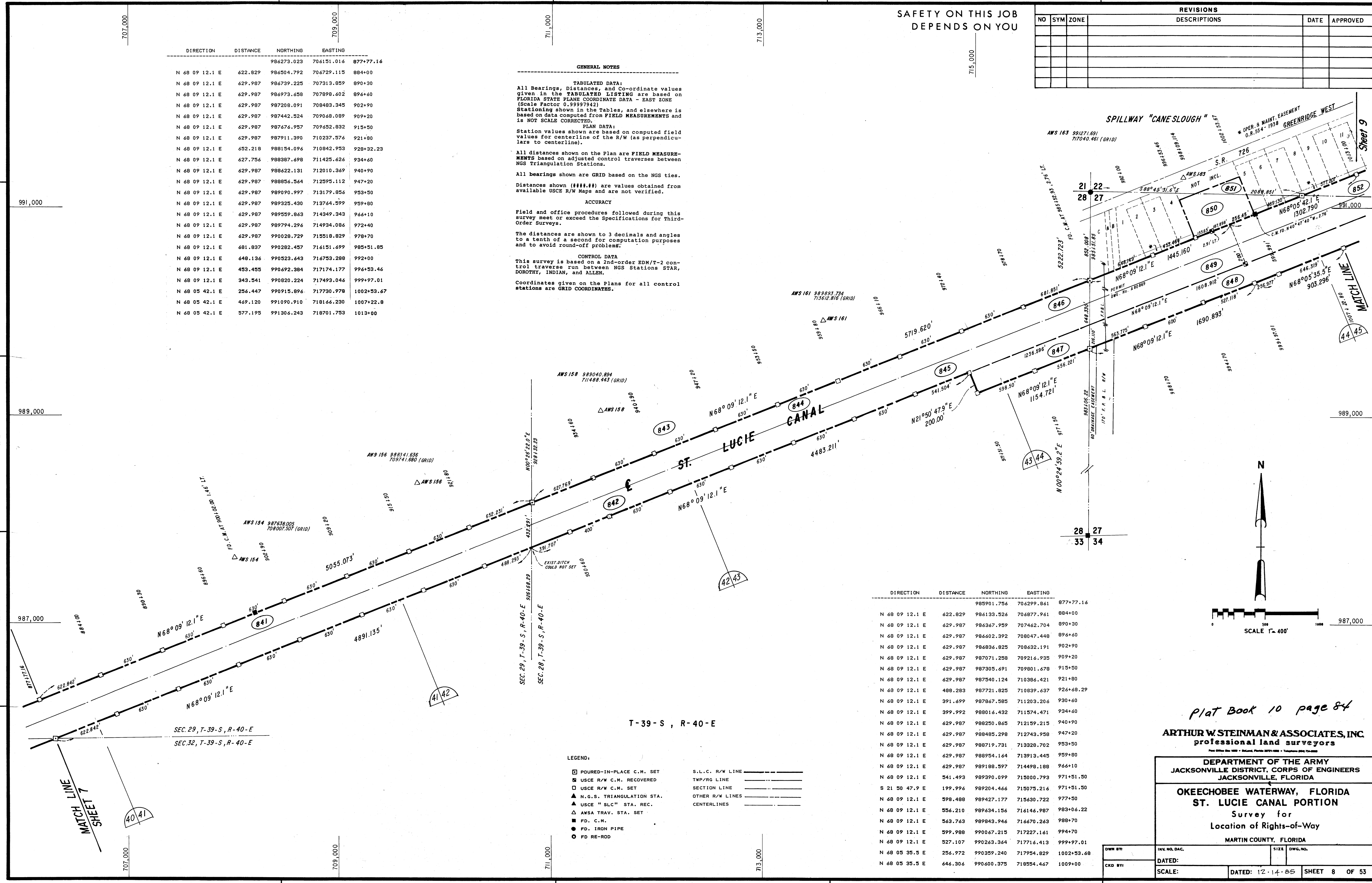
Distances shown (####.##) are values obtained from available USCE R/W Maps and are not verified.

**ACCURACY**  
Field and office procedures followed during this survey meet or exceed the Specifications for Third-Order Surveys.

The distances are shown to 3 decimals and angles to a tenth of a second for computation purposes and to avoid round-off problems.

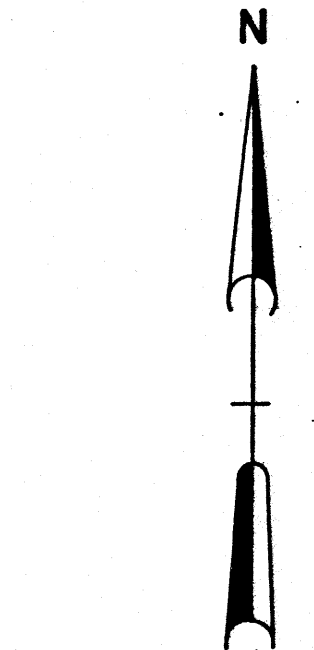
**CONTROL DATA**  
This survey is based on a 2nd-order EDM/T-2 control traverse run between NGS Stations STAR, DOROTHY, INDIAN, and ALLEN.

Coordinates given on the Plans for all control stations are GRID COORDINATES.



DIRECTION	DISTANCE	NORTHING	EASTING
N 68 09 12.1 E	622.829	985901.756	706299.861
N 68 09 12.1 E	629.987	986133.526	706877.961
N 68 09 12.1 E	629.987	986367.959	707462.704
N 68 09 12.1 E	629.987	986602.392	708047.448
N 68 09 12.1 E	629.987	986836.825	708632.191
N 68 09 12.1 E	629.987	987071.258	709216.935
N 68 09 12.1 E	629.987	987305.691	709801.678
N 68 09 12.1 E	629.987	987540.124	710386.421
N 68 09 12.1 E	488.283	987774.557	710971.164
N 68 09 12.1 E	391.699	987967.585	711203.206
N 68 09 12.1 E	399.922	988161.432	711574.471
N 68 09 12.1 E	629.987	988395.865	712159.215
N 68 09 12.1 E	629.987	988630.298	712743.958
N 68 09 12.1 E	629.987	988864.731	713328.702
N 68 09 12.1 E	629.987	989099.164	713913.445
N 68 09 12.1 E	629.987	989333.597	714498.188
N 68 09 12.1 E	629.987	989568.030	715082.931
S 21 50 47.9 E	199.996	989802.466	715667.674
N 68 09 12.1 E	598.488	989996.313	716252.417
N 68 09 12.1 E	556.210	990190.160	716837.160
N 68 09 12.1 E	563.763	990384.007	717421.903
N 68 09 12.1 E	599.988	990577.854	718006.646
N 68 09 12.1 E	527.107	990771.701	718591.389
N 68 05 35.5 E	256.972	990965.548	719176.132
N 68 05 35.5 E	446.306	991159.395	719760.875

- LEGEND:**
- POURED-IN-PLACE C.M. SET
  - USCE R/W C.M. RECOVERED
  - USCE R/W C.M. SET
  - ▲ N.G.S. TRIANGULATION STA.
  - ▲ USCE "SLC" STA. REC.
  - ▲ AWSA TRAV. STA. SET
  - PD. C.M.
  - PD. IRON PIPE
  - PD RE-ROD
- S.L.C. R/W LINE \_\_\_\_\_
- TWP/RG LINE \_\_\_\_\_
- SECTION LINE \_\_\_\_\_
- OTHER R/W LINES \_\_\_\_\_
- CENTERLINES \_\_\_\_\_



Plat Book 10 page 84

**ARTHUR W. STEINMAN & ASSOCIATES, INC.**  
Professional Land Surveyors

DEPARTMENT OF THE ARMY  
JACKSONVILLE DISTRICT, CORPS OF ENGINEERS  
JACKSONVILLE, FLORIDA

**OKEECHOBEE WATERWAY, FLORIDA**  
ST. LUCIE CANAL PORTION  
Survey for  
Location of Rights-of-Way  
MARTIN COUNTY, FLORIDA

DWG. BY:	CHK. NO. DAC:	DATE:	SCALE:
CRD. BY:	DATE: 12-14-85	SHEET 8 OF 53	

DO. FILE NO. 120B-34,724